

MOTOR SPECIFICATION SHEET
THREE-PHASE ASYNCHRONOUS MOTOR

SPECIFIC.N°: DSD160053

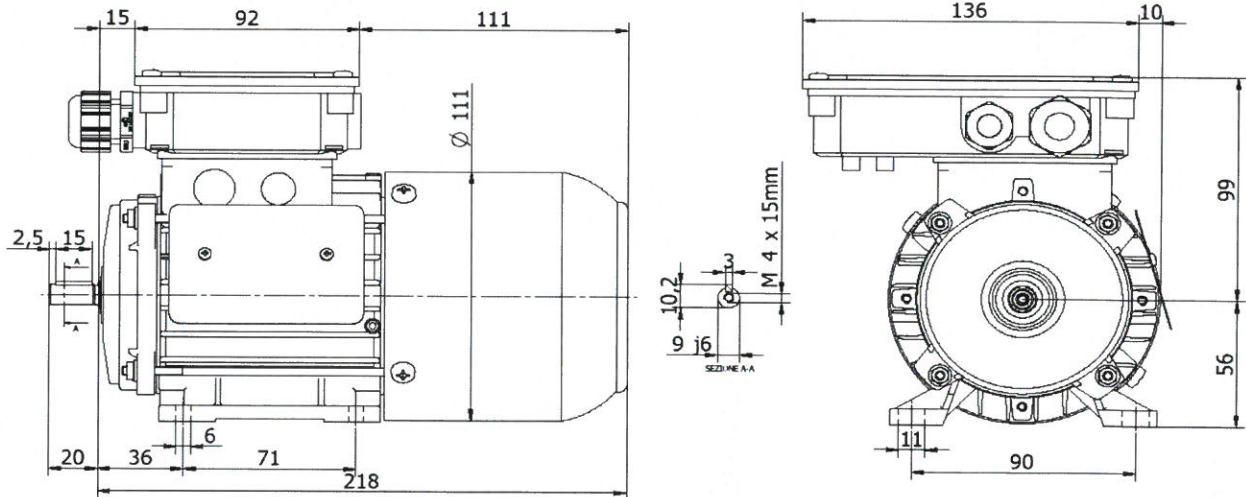
BONANI
MOTORI ELETTRICI

BONANI
MOTORI ELETTRICI

by BONANI S.P.A.

BONANI PART NUMBER :	A4ABA03000P	FRAME :	IEC 56	
CUSTOMER PART NUMBER :		MOUNTING / POSITION :	IMB3 / HORIZONTAL	
MOTOR TYPE :	TRP56B4	MATERIAL FLANGE/END SHILD :	alluminium	
PROTECTION DEGREE :	IP55	MATERIAL TERMINAL BOX :	alluminium	
VOLTAGE :	230 / 400 - 50Hz	MATERIAL FAN :	nylon polyamide 6	
		MATERIAL COVER FAN :	galvanized steel	
		MATERIAL SHAFT :	C43 steel	
VOLTAGE TOLLERANCE :	+/- 5% TO NOMINAL	DE BEARING TYPE :	6201 2RS	
POLES :	4	NDE BEARING TYPE :	6201 2RS	
NOMINAL POWER [Kw] :	0,09 Kw (50Hz)	MOTOR COLOUR :		
CURRENT [Amp] :	0,75 / 0,43 (50Hz)	SPECIAL CHARACTERISTICS :	POSITIVE BRAKE 24Vdc PTO PROTECTION	
STARTING CURRENT [Amp] :	2,1 / 1,2			
COS FI :	0,60			
EFFICIENCY :				
SPEED [rpm] :	1350			
DIRECTION OF ROTATION :	BIDIRECTIONAL			
ENVIROMENT CONDITION :	-15/+40°C	NAME PLATE POSITION		RIGHT (STD)
ALTITUDE OF DUTY :	MAX. 1000m	TERMINAL BOX POSITION :		"A" SIDE (FRONT)
DUTY :	S1	CABLE GLAND TYPE :		M16x1.5 + M20x1,5
INSULATION CLASS :	F	CABLE GLAND POSITION :		FRONT
TIPE OF WINDING :	STANDARD WHIT PHASE INSULAT.	POSITION OF TERMINAL BOX :	TOP	
ANTICONDENSATION HEATER :	/	WEIGHT [Kg] :	4 Kg	

OVERALL DIMENSIONS



OTHER CHARACTERISTIC

MOTOR COMPLIES WITH FOLLOWING STANDARDS

- RATING AND PERFORMANCE EN60034-1
- EFFICIENCY CLASS EN 60034-30
- VOLTAGE STANDARDS IEC38
- MOUNTING CHARACTERISTICS IEC34-7
- PROTECTION DEGREE IEC34-5
- DIMENSIONAL IEC72-1
- LOW VOLTAGE DIRECTIVE 2006/95/EC (LVD)
- DIRECTIVE 2004/108/EC (EMC)
- MACHINE DIRECTIVE 2006/42/EC
- SAFETY: EN60204
- DIELECTRIC STRENGTH TEST & ISULATION: COMPLY CE144-5 EN60204-1
- DIRECTIVE (RoHS) 2002/95/EC

ELECTRICAL CONNECTION

