



BALL JOINTS

### BL SERIES

**Description:**

BL-Series is our 4-piece standard range of die cast zinc alloy ball joints suitable for medium industrial/mechanical load applications requiring smooth action and good wear resistance. The body is die cast around the ball giving an ultra smooth surface contact area, the ball stud is hardened and friction welded to the ball. The neoprene gaiter helps resist dirt contamination.

**Material Specifications:**

Body: Die cast zinc alloy. Ball: 100Cr6 bearing steel. Ball stud: Steel S35C case hardened zinc plated white and blue passivate (silver/clear). Gaiter: Neoprene.

**Features**

Metric thread sizes Ultra smooth action Strong & cost effective High pull out load axial & radial. Good wear resistance. Lubricated

**Possible Applications**

Industrial equipment Construction equipment Agricultural equipment Lawn & garden equipment

**Temperature Range**

-30°C to +120°C

**Specification**

ELV & RoHS compliant

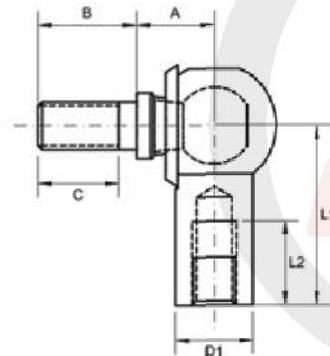


**Interchange table**

Dunlop	IKO	THK	Alinabal	SKF	Asahi	Rose
BL (metric)	LHSA	BL-D	-	-	-	-

Note: Manufacturers part numbers are used for descriptive purposes only and may not be direct equivalent products.

### BL SERIES: DIE CAST BALL JOINTS (METRIC)



**Body:** Die cast zinc alloy.

**Ball:** 100CR6 bearing steel.

**Ball Stud:** S35C, case hardened zinc plated white and blue passivate (silver/clear).

**Seal:** Neoprene.

**Specification:** ELV and RoHS compliant.



Part No. Right Hand	Part No. Left Hand	Body Thread	Stud Thread	Ball Dia	L1	L2 Min	Stud A/F	A	B	C Min	D1
BL6D	BL6DL	M6X1.00	M10X1.25	8	30	16	10	11.0	15.0	11.0	11
BL8D	BL8DL	M8X1.25	M8X1.25	8	36	19	12	14.0	17.0	12.0	14
BL10BD	BL10BDL	M10X1.50	M10X1.50	10	43	23	14	17.0	26.0	21.0	17
BL10D	BL10DL	M10X1.25	M10X1.25	13	43	23	14	17.0	20.0	15.0	17
BL12BD	BL12BDL	M12X1.75	M12X1.75	13	50	26	17	19.0	30.0	24.0	19
BL12D	BL12DL	M12X1.25	M12X1.25	13	50	26	17	19.0	23.0	17.0	19
BL14BD	BL14BDL	M14X2.00	M14X2.00	13	57	30	19	21.5	40.5	28.0	22
BL14D	BL14DL	M14X1.50	M14X1.50	13	57	30	19	21.5	34.5	22.0	22
BL16BD	BL16BDL	M16X2.00	M16X2.00	13	64	34	22	23.5	42.5	29.0	24
BL16D	BL16DL	M16X1.50	M16X1.50	13	64	34	22	23.5	36.5	23.0	24