

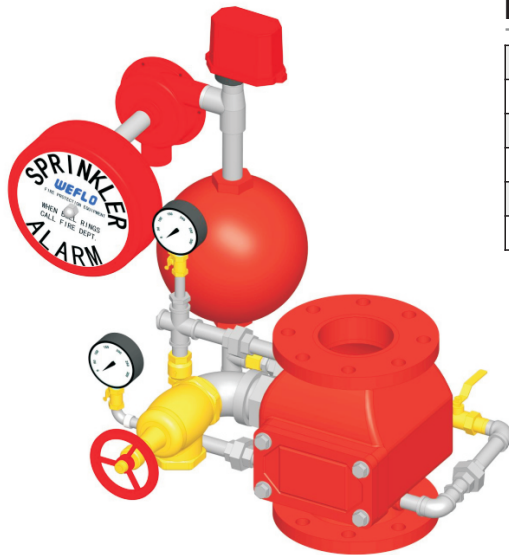
Alarm Check Valve

FIG. F1511-300 / F1512-300 / F1522-300

Specifications

- Multiple End Types for Main Valve
F1511-300: Flange by Flange
F1512-300: Flange by Groove
F1522-300: Groove by Groove
- Flanged Connections are Drilled per EN1092 -PN10/16 or ANSI B16.1 Class 125. (Other Flange Types Available Upon Request)
- Grooved Connections are cut in accordance with standard Groove Specifications for Steel Pipe.
- Excellent Flow Characteristics.
- Automatically actuates electrically and / or hydraulically operated alarms when there is a steady flow equivalent to the discharge rate for one or more sprinklers.
- Retard Chamber used in installations subject to variable pressure to help prevent false alarms.
- For use in Wet Pipe (automatic sprinkler) Fire Protection Systems.
- Alarm Check Valves should be installed vertically orientation.
- UL 193 Listed and FM 1041 Approved.
- 3C and CE Certified.
- Rated Working Pressure
UL/FM: 20 to 300 psi
CE: 1.4 bar to 16 bar
- Fusion Bonded Epoxy Coated Interior and Exterior to AWWA C550 Standard.

Material Specifications



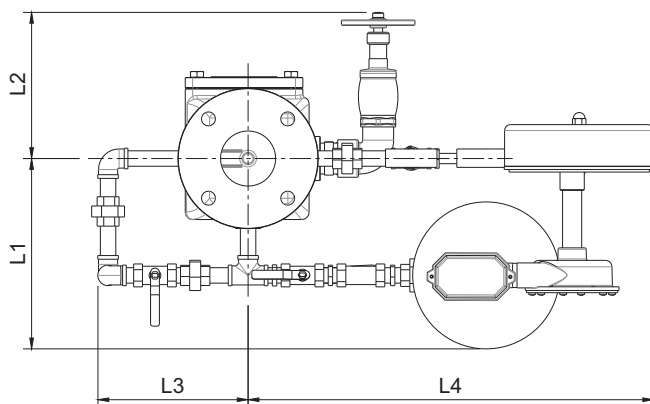
Main Valve

Part	Material	ASTM Specification	EN Specification
Body	Ductile Iron	A536 Grade 65-45-12	EN 1563 EN-GJS-450-10
Hinge Pin	Stainless Steel	A276 Type 304	EN 10088 X5CrNi18-10
Disc	Ductile Iron	A536 Grade 65-45-12	EN 1563 EN-GJS-450-10
Disc Seat	Rubber	D2000 EPDM	EN 681 EPDM
Body Seat	Bronze	B62 C83600	EN 1982 CuSn5Zn5Pb5

Accessories

Specification	Material
Screwed Pipe	Carbon Steel
Pipe Fittings	Malleable Iron
Ball Valve	Brass
Pressure Gauge	Assembly
Check Valve	Brass
Angle Valve	Brass
Y-Strainer	Brass
Restrictor	Brass
Water Motor	Assembly
Pressure Switch	Assembly
Retard Chamber	Gray Cast Iron

Dimensions (mm/inch)



Size	L1	L2	L3	L4
2-1/2"	250/9.8	200/7.9	150/5.9	520/20.5
3"	250/9.8	200/7.9	150/5.9	520/20.5
4"	280/11.0	250/9.8	150/5.9	520/20.5
6"	300/11.8	250/9.8	190/7.5	520/20.5
8"	320/12.6	250/9.8	210/8.3	520/20.5

Notes

- 2.5" Valve are UL listed.
- Designs, materials and specifications shown are subject to change without notice due to the continuous development of our products.