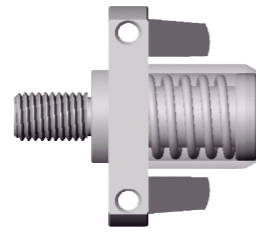
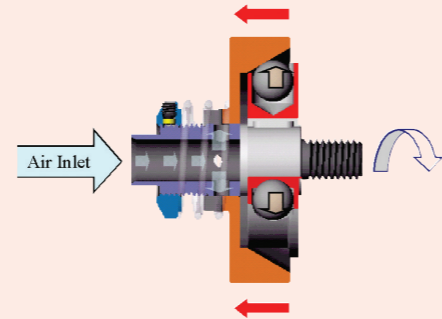


ILLUSTRATION OF GOVERNOR



Traditional Governor

Long proven construction with two pendulums. The pendulums extends due to centrifugal force and block intake, also the spring adjusts pendulums by retraction to control free speed. However, the free speed can not be controlled effectively within standard RPM when air pressure increases.



Patent Over Speed Control Governor

Linear Motion performing from the balls and cone-shape takes over the Centrifugal force from Pendulum Structure. The design of cutting off air prevents overloaded air pressure. It efficiently remains free speed in standard RPM.

AIR VERTICAL / STRAIGHT GRINDER



GP-919
 Patent: Over Speed Control Governor

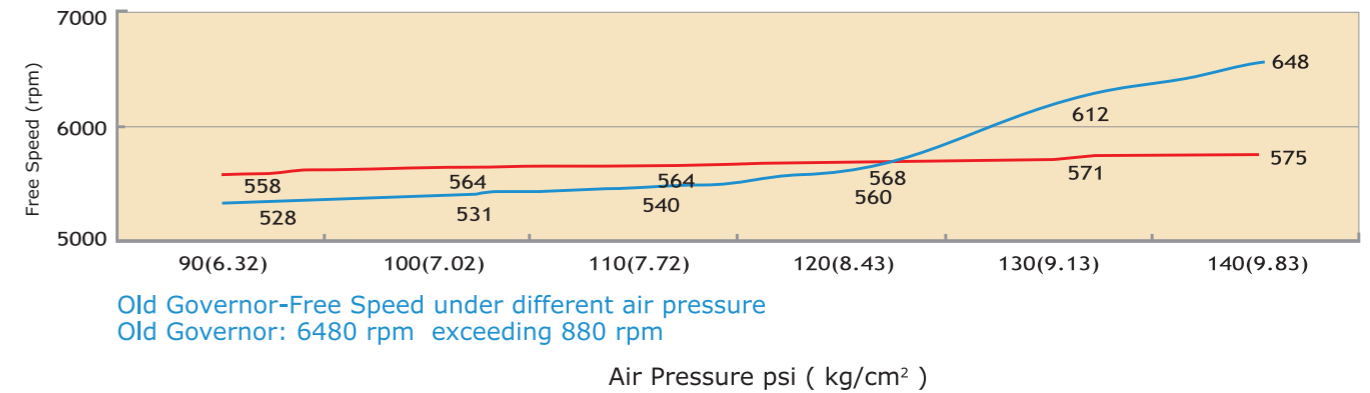


GP-915
 Patent: Over Speed Control Governor

COMPARISON BETWEEN TRADITIONAL & PATENT OVER SPEED-CONTROL GOVERNOR

Testing Model: GP-918 9" Air Vertical Grinder
 Standard RPM: 5,600 rpm (±200 rpm)
 Testing data:

New Governor-Free Speed under different air pressure
 New Governor: 5750 rpm exceeding 150 rpm only



GP-918
 Patent: Over Speed Control Governor



GP-917A



GP-920 without Grinding Wheel

Specifications

Recommended Air Pressure 90 psi (6.3 kg/cm²)

Model	Wheel Size	Spindle Thread	Max. Speed (rpm)	Net Weight (kgs)	Length (mm)	Air Cons. (m ³ /min)	Air Inlet	Hose Size (mm)	Sound Pressure (dBA)	Vibration (m/sec ²)	Packing
GP-919	7"(178mm)	5/8"-11, M14	7,000	4.20	340	0.46	1/2"	13	84	3.3	4 pcs/2.1 cu-ft/G.W.: 21 kgs
GP-915	9"(229mm)	5/8"-11, M14	6,000	4.40	340	0.46	1/2"	13	83	3.3	4 pcs/2.9 cu-ft/G.W.: 24.5 kgs
GP-918	9"(229mm)	5/8"-11	5,600	4.97	355	0.76	1/2"	13	90	3.8	4 pcs/2.9 cu-ft/G.W.: 28 kgs
GP-917A	ø75xø9.5x13	--	13,500	1.67	343	0.56	1/4"	10	87	< 2.5	10 pcs/0.90 cu-ft/G.W.: 19.51 kgs
GP-920	ø150xø20x25 (ø32)	--	5,700	5.16	500	0.76	1/2"	13	87	< 2.5	4 pcs/1.3 cu-ft/G.W.: 23 kgs

AIR ANGLE GRINDER



GP-832
GP-832-5
▶ Grip Lever



GP-832L
GP-832L-5
▶ Safety Lever
▶ Patent: Over Speed Control Governor



GP-911
▶ Safety Lever



GP-914 Grinder & Sander
▶ Safety Lever
▶ Patent: Over Speed Control Governor



GP-831
▶ Grip Lever
▶ Patent: Over Speed Control Governor



GP-831LN
GP-831LAN for Hub Grinding wheel
▶ Safety Lever
▶ Patent: Over Speed Control Governor



GP-832S
GP-832-5S
▶ Grip Lever



GP-832LS
GP-832L-5S
▶ Safety Lever
▶ Patent: Over Speed Control Governor



GP-911S
▶ Safety Lever



GP-914S
▶ Safety Lever
▶ Patent: Over Speed Control Governor

AIR ANGLE GRINDER (STOP-SPANNER FREE SERIES)



▶ Grip Lever
GP-971
GP-971-5



▶ ON/OFF Switch
GP-971A
GP-971A-5



▶ Safety Lever
GP-971L
GP-971L-5

Specifications

Recommended Air Pressure 90 psi (6.3 kg/cm²)

Model	Wheel Size	Spindle Thread	Max.Speed (rpm)	Horse Power (HP)	Net Weight (kgs)	Length (mm)	Air Cons. (m ³ /min)	Air Inlet	Hose Size (mm)	Sound Pressure (dBA)	Vibration (m/sec ²)	Packing
GP-832	4" (100mm)	3/8"-24, M10	12,000	0.6	1.54	227	0.45	1/4"	8	80	< 2.5	10 pcs/1.45 cu-ft/G.W.: 21 kgs
GP-832-5	5" (127mm)	5/8"-11, M14	11,000	0.6	1.69	227	0.45	1/4"	8	80	< 2.5	10 pcs/1.45 cu-ft/G.W.: 23 kgs
GP-832L	4" (100mm)	3/8"-24, M10	12,000	0.6	1.69	226	0.45	1/4"	8	80	< 2.5	10 pcs/1.75 cu-ft/G.W.: 24 kgs
GP-832L-5	5" (127mm)	5/8"-11, M14	11,000	0.6	1.82	226	0.45	1/4"	8	80	< 2.5	10 pcs/1.75 cu-ft/G.W.: 25 kgs
GP-911	5" (127mm)	5/8"-11, M14	11,000	0.6	1.79	257	0.45	1/4"	8	80	< 2.5	10 pcs/1.75 cu-ft/G.W.: 25 kgs
GP-914	4-1/2" (110mm)	M10	12,000	0.6	1.79	223	0.45	1/4"	8	80	< 2.5	10 pcs/1.75 cu-ft/G.W.: 25 kgs
GP-831	7" (178mm)	5/8"-11, M14	7,000	1.0	3.04	277	0.50	3/8"	11	96	3.2	6 pcs/1.8 cu-ft/G.W.: 24 kgs
GP-831LN	7" (178mm)	5/8"-11, M14	7,000	1.0	3.05	331	0.50	3/8"	11	96	3.2	6 pcs/2.0 cu-ft/G.W.: 25 kgs
GP-971	4" (100mm)	3/8"-24	11,000	0.5	1.34	189	0.68	1/4"	8	95	< 2.5	10 pcs/1.45 cu-ft/G.W.: 18 kgs
GP-971-5	5" (127mm)	M14	11,000	0.5	1.39	189	0.68	1/4"	8	95	< 2.5	10 pcs/1.45 cu-ft/G.W.: 18 kgs
GP-971A	4" (100mm)	3/8"-24	11,000	0.5	1.72	220	0.68	1/4"	8	95	< 2.5	10 pcs/1.45 cu-ft/G.W.: 18 kgs
GP-971A-5	5" (127mm)	M14	11,000	0.5	1.77	220	0.68	1/4"	8	95	< 2.5	10 pcs/1.45 cu-ft/G.W.: 18 kgs
GP-971L	4" (100mm)	3/8"-24	11,000	0.5	1.71	233	0.68	1/4"	8	95	< 2.5	10 pcs/1.75 cu-ft/G.W.: 20 kgs
GP-971L-5	5" (127mm)	M14	11,000	0.5	1.75	233	0.68	1/4"	8	95	< 2.5	10 pcs/1.75 cu-ft/G.W.: 20 kgs

ONLY ONE SPANNER NEEDED change grinding wheel faster and easier

While replacing grinding disc, fix Gear Shaft by simply turning and pushing the Stop Knob instead of using a stop spanner.



Specifications

Recommended Air Pressure 90 psi (6.3 kg/cm²)

Model	Wheel Size	Spindle Thread	Max.Speed (rpm)	Horse Power (HP)	Net Weight (kgs)	Length (mm)	Air Cons. (m ³ /min)	Air Inlet	Hose Size (mm)	Sound Pressure (dBA)	Vibration (m/sec ²)	Packing
GP-832S	4" (100mm)	3/8"-24, M10	11,000	0.6	1.54	227	0.45	1/4"	8	80	< 2.5	10 pcs/1.45 cu-ft/G.W.: 21 kgs
GP-832-5S	5" (127mm)	3/8"-24, M10	11,000	0.6	1.69	227	0.45	1/4"	8	80	< 2.5	10 pcs/1.45 cu-ft/G.W.: 23 kgs
GP-832LS	4" (100mm)	3/8"-24, M10	11,000	0.6	1.69	226	0.45	1/4"	8	80	< 2.5	10 pcs/1.75 cu-ft/G.W.: 24 kgs
GP-832L-5S	5" (127mm)	3/8"-24, M10	11,000	0.6	1.82	226	0.45	1/4"	8	80	< 2.5	10 pcs/1.75 cu-ft/G.W.: 25 kgs
GP-911S	5" (127mm)	5/8"-11, M14	11,000	0.6	1.79	257	0.45	1/4"	8	80	< 2.5	10 pcs/1.75 cu-ft/G.W.: 25 kgs
GP-914S	4-1/2" (110mm)	5/8"-11, M10	12,000	0.6	1.79	223	0.45	1/4"	8	80	< 2.5	10 pcs/1.75 cu-ft/G.W.: 25 kgs

MINI AIR ANGLE GRINDER



- ▶ Composite
 - ▶ No Gear
 - ▶ 100°
 - ▶ Rear Exhaust
- GP-824CGR**



GP-824GS

AIR DIE GRINDER



▶ Rear Exhaust
GP-824ST / GP-824ST1



▶ Rear Exhaust
GP-824ST2 / GP-824ST3



▶ Grip Lever
▶ Side Exhaust
GP-824JS



▶ Side Exhaust
GP-824JH



▶ Composite
GP-824LG



▶ Composite
▶ Rear Exhaust
GP-824LGR

Specifications

Recommended Air Pressure 90 psi (6.3 kg/cm²)

Model	Wheel Size	Max.Speed (rpm)	Net Weight (kgs)	Length (mm)	Air Cons. (m ³ /min)	Air Inlet	Hose Size (mm)	Sound Pressure (dBA)	Vibration (m/sec ²)	Packing
GP-824CGR	50 mm (2")	22,000	0.51	177	0.35	1/4"	6.5	75	< 2.5	20 pcs/1.1 cu-ft/G.W.: 12 kgs
GP-824GS	50 mm (2")	15,000	0.83	178	0.56	1/4"	6.5	87	< 2.5	12 pcs/0.8 cu-ft/G.W.: 12 kgs



▶ Rear Exhaust
GP-824



▶ Rear Exhaust
GP-824T



GP-824S



▶ Rear Exhaust
GP-824B



GP-824JAS



▶ Rear Exhaust
GP-824JCS

Specifications

Recommended Air Pressure 90 psi (6.3 kg/cm²)

Model	Collet Size	Max.Speed (rpm)	Net Weight (kgs)	Length (mm)	Air Cons. (m ³ /min)	Air Inlet	Hose Size (mm)	Sound Pressure (dBA)	Vibration (m/sec ²)	Packing
GP-824ST	6 mm (1/4")	22,000	0.60	178	0.61	1/4"	5	86	< 2.5	12 pcs/0.8 cu-ft/G.W.: 10 kgs
GP-824ST1	6 mm (1/4")	25,000	0.40	155	0.42	1/4"	5	86	< 2.5	12 pcs/0.8 cu-ft/G.W.: 8.7 kgs
GP-824ST2	6 mm (1/4")	2,600	0.70	209	0.62	1/4"	6.5	83	< 2.5	12 pcs/1.1 cu-ft/G.W.: 12 kgs
GP-824ST3	6 mm (1/4")	3,600	0.70	209	0.62	1/4"	6.5	83	< 2.5	12 pcs/1.1 cu-ft/G.W.: 12 kgs
GP-824	6 mm (1/4")	22,000	0.70	168	0.51	1/4"	5	90	< 2.5	20 pcs/0.65 cu-ft/G.W.: 15.5 kgs
GP-824T	6 mm (1/4")	25,000	0.46	152	0.63	1/4"	5	87	< 2.5	20 pcs/0.73 cu-ft/G.W.: 11.0 kgs
GP-824S	6 mm (1/4")	22,000	0.33	137	0.22	1/4"	5	90	< 2.5	25 pcs/0.76 cu-ft/G.W.: 10 kgs
GP-824B	6 mm (1/4")	25,000	0.90	130	0.42	1/4"	5	84	< 2.5	10 pcs/1.3 cu-ft/G.W.: 11 kgs
GP-824JAS	6 mm (1/4")	20,000	0.55	170	0.42	1/4"	5	84	< 2.5	20 pcs/0.6 cu-ft/G.W.: 14 kgs
GP-824JCS	6 mm (1/4")	17,000	0.78	170	0.35	1/4"	5	84	< 2.5	10 pcs/1.3 cu-ft/G.W.: 11 kgs
GP-824JS	6 mm (1/4")	20,000	0.70	175	0.49	1/4"	5	85	< 2.5	20 pcs/1.1 cu-ft/G.W.: 19 kgs
GP-824JH	6 mm (1/4")	20,000	0.70	165	0.49	1/4"	5	85	< 2.5	20 pcs/1.1 cu-ft/G.W.: 19 kgs
GP-824LG	6 mm (1/4")	20,000	0.40	150	0.42	1/4"	5	80	< 2.5	20 pcs/0.5 cu-ft/G.W.: 11 kgs
GP-824LGR	6 mm (1/4")	20,000	0.40	150	0.42	1/4"	5	73	< 2.5	20 pcs/0.5 cu-ft/G.W.: 11 kgs

AIR EXTENSION DIE GRINDER



GP-824EA



GP-824ED



GP-824STE
GP-824STE1



GP-824EF

AIR ANGLE DIE GRINDER



GP-824LGA



▶ Rear Exhaust
GP-824TA



▶ 110°
▶ No Gear
▶ Rear Exhaust
GP-824CA



▶ Composite ▶ No Gear
▶ 100° ▶ Rear Exhaust
GP-824MR



▶ Side Exhaust
GP-824L1



▶ Grip Lever
▶ Side Exhaust
GP-824SL

Specifications

Recommended Air Pressure 90 psi (6.3 kg/cm²)

Model	Collet Size	Max. Speed (rpm)	Net Weight (kgs)	Length (mm)	Air Cons. (m ³ /min)	Air Inlet	Hose Size (mm)	Sound Pressure (dBA)	Vibration (m/sec ²)	Packing
GP-824EA	6 mm (1/4")	20,000	1.15	333	0.49	1/4"	5	99	< 2.5	16 pcs/0.75 cu-ft/G.W.: 23.5 kgs
GP-824ED	6 mm (1/4")	24,000	0.65	248	0.42	1/4"	5	99	< 2.5	20 pcs/0.85 cu-ft/G.W.: 15 kgs
GP-824STE	6 mm (1/4")	22,000	0.80	280	0.56	1/4"	5	85	< 2.5	12 pcs/1.1 cu-ft/G.W.: 13 kgs
GP-824STE1	6 mm (1/4")	22,000	0.70	240	0.50	1/4"	5	85	< 2.5	12 pcs/1.1 cu-ft/G.W.: 13 kgs
GP-824EF	6 mm or 8 mm	13,500	1.74	378	0.59	1/4"	6.5	86	< 2.5	10 pcs/0.90 cu-ft/G.W.: 20.5 kgs
GP-824L1	6 mm (1/4")	18,000	1.10	320	0.45	1/4"	5	89	< 2.5	20 pcs/1.7 cu-ft/G.W.: 28 kgs
GP-824SL	6 mm (1/4")	18,000	1.10	320	0.45	1/4"	5	89	< 2.5	20 pcs/1.7 cu-ft/G.W.: 28 kgs



GP-824STA
GP-824STA1



▶ 115°
GP-824STA2

Specifications

Recommended Air Pressure 90 psi (6.3 kg/cm²)

Model	Collet Size	Max. Speed (rpm)	Net Weight (kgs)	Length (mm)	Air Cons. (m ³ /min)	Air Inlet	Hose Size (mm)	Sound Pressure (dBA)	Vibration (m/sec ²)	Packing
GP-824LGA	6 mm (1/4")	18,000	0.65	155	0.42	1/4"	5	95	< 2.5	20 pcs/0.95 cu-ft/G.W.: 14.5 kgs
GP-824TA	6 mm (1/4")	20,000	0.62	154	0.51	1/4"	5	94	< 2.5	20 pcs/0.73 cu-ft/G.W.: 14 kgs
GP-824STA	6 mm (1/4")	18,000	0.70	178	0.56	1/4"	5	87	< 2.5	12 pcs/0.80 cu-ft/G.W.: 12 kgs
GP-824STA1	6 mm (1/4")	20,000	0.50	155	0.42	1/4"	5	87	< 2.5	12 pcs/0.80 cu-ft/G.W.: 9.6 kgs
GP-824STA2	6 mm (1/4")	18,000	0.70	178	0.49	1/4"	5	86	< 2.5	12 pcs/0.80 cu-ft/G.W.: 11.8 kgs
GP-824CA	6 mm (1/4")	25,000	0.70	142	0.35	1/4"	5	85	< 2.5	10 pcs/1.4 cu-ft/G.W.: 9.0 kgs
GP-824MR	6 mm (1/4")	22,000	0.55	170	0.49	1/4"	5	80	< 2.5	20 pcs/1.1 cu-ft/G.W.: 12 kgs

MICRO AIR GRINDER



GP-8241



GP-8240D



GP-8240B
GP-8240C ▶ Comppsite Blade



GP-8243B



GP-8242B
GP-8242C ▶ Comppsite Blade



▶ Comppsite Blades
GP-8245C



▶ Comppsite Blades
▶ 5 pcs Bearing support
▶ Industrial Type
GP-8246C

AIR DIE GRINDER KITS



GP-824K



GP-824STK



GP-824STAK

MICRO AIR GRINDER KITS



GP-8240BK / GP-8243BK / GP-8242BK
GP-8240CK / GP-8242CK
GP-8245CK / GP-8246CK

Specifications

Recommended Air Pressure 90 psi (6.3 kg/cm²)

Model	Collet Size	Max.Speed (rpm)	Net Weight (kgs)	Length (mm)	Air Cons. (m ³ /min)	Air Inlet	Hose Size (mm)	Sound Pressure (dBA)	Vibration (m/sec ²)	Packing
GP-8241	--	22,000	0.54	136	0.21	1/4"	5	83	< 2.5	20 pcs/1.9 cu-ft/G.W.: 12.0 kgs
GP-8240D	3 & 6 mm	35,000	0.50	175	0.34	1/4"	5	82	< 2.5	20 pcs/0.9 cu-ft/G.W.: 11 kgs
GP-8240B	3 mm (1/8")	54,000	0.23	132	0.23	1/4"	5	84	< 2.5	20 pcs/1.25 cu-ft/G.W.: 15 kgs
GP-8240C	3 mm (1/8")	54,000	0.23	132	0.23	1/4"	5	84	< 2.5	20 pcs/1.25 cu-ft/G.W.: 15 kgs
GP-8243B	3 mm (1/8")	60,000	0.23	132	0.21	1/4"	5	82	< 2.5	20 pcs/1.25 cu-ft/G.W.: 15 kgs
GP-8242B	3 mm (1/8")	70,000	0.23	132	0.21	1/4"	5	80	< 2.5	20 pcs/1.25 cu-ft/G.W.: 15 kgs
GP-8242C	3 mm (1/8")	70,000	0.23	132	0.21	1/4"	5	80	< 2.5	20 pcs/1.25 cu-ft/G.W.: 15 kgs
GP-8245C	3 mm (1/8")	60,000	0.30	135	0.21	1/4"	5	84	< 2.5	20 pcs/1.3 cu-ft/G.W.: 16 kgs
GP-8246C	3 mm (1/8")	60,000	0.35	135	0.23	1/4"	5	85	< 2.5	20 pcs/1.3 cu-ft/G.W.: 16 kgs

GP-824K		GP-824STK		GP-824STAK	
1 pc	6 mm (1/4") Air Die Grinder (GP-824)	1 pc	6 mm (1/4") Air Die Grinder (GP-824ST)	1 pc	6 mm (1/4") Air Die Grinder (GP-824STA)
1 pc	3 mm (1/8") Collet	1 pc	3 mm (1/8") Collet	1 pc	3 mm (1/8") Collet
5 pcs	6 mm (1/4") Shank Stone	5 pcs	6 mm (1/4") Shank Stone	5 pcs	6 mm (1/4") Shank Stone
5 pcs	3 mm (1/8") Shank Stone	5 pcs	3 mm (1/8") Shank Stone	5 pcs	3 mm (1/8") Shank Stone
1 pc	Nipple	1 pc	Nipple	5 pcs	2" Roloc Scotch Discs
2 pcs	Key Wrench	2 pcs	Key Wrench	5 pcs	3" Roloc Scotch Discs
1 pc	Plastic Box	1 pc	Plastic Box	1 pc	Nipple
Packing 10 sets/1.20 cu-ft/G.W.: 15 kgs		Packing 10 sets/1.20 cu-ft/G.W.: 13 kgs		Packing 10 sets/1.80 cu-ft/G.W.: 18.6 kgs	

GP-8240BK / GP-8243BK / GP-8242BK / GP-8240CK / GP-8242CK / GP-8245CK / GP-8246CK	
1 pc	Micro Air Grinder
10pcs	3 mm (1/8") Shank Stone
1 pc	Mini Oiler
1 pc	Oil Pot
2 pcs	Key Wrench
1 pc	Plastic Box
Packing 20 sets/2.5 cu-ft/G.W.: 16 kgs	